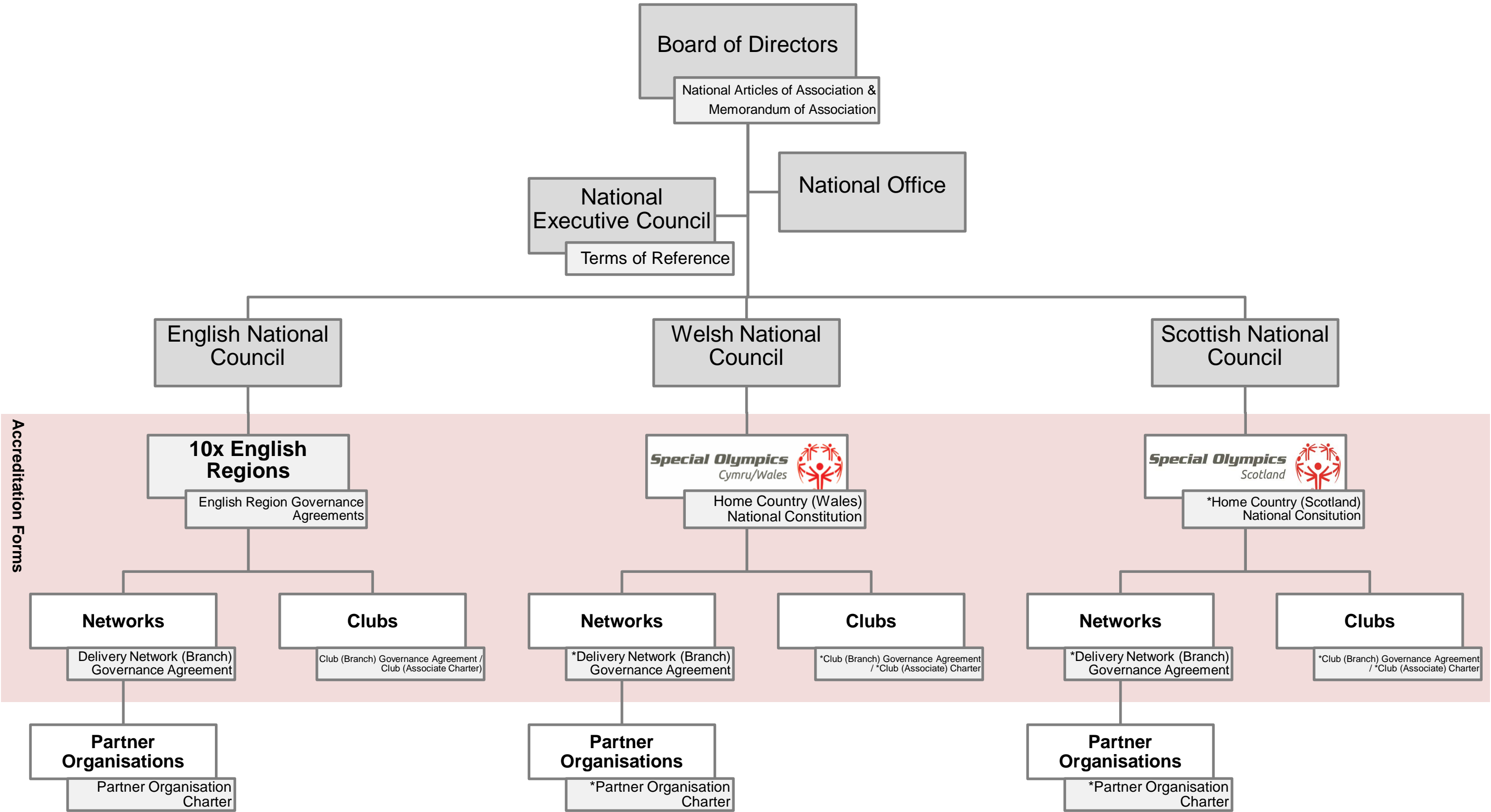


Special Olympics GB National Programme Structure



Structure

The term “**Delivery Network**” (to be changed to “**Network**” in due course) only refers to the recognised larger, more complex, more diverse structure that is in place within a particular accredited Club. This is reflected by the additional level within this structure, termed “**Partner Organisations**”, supporting wider and formalised communication across an area, County or City, to engage more members and supporters.

The term “**Club**” refers to the smaller, perhaps less formal structure that is in place within a particular Club

Type

Each accredited Club (regardless of their structure) *could* have either a **Branch** or **Associate** type of accreditation with Special Olympics GB. However, at present National Office restricts Clubs with a Delivery Network structure to taking Branch type of accreditation.

Recognised Club Structure	Available Accreditation Type
Club	Branch or Associate
Delivery Network (Network)	Branch

Special Olympics GB currently has **150 Clubs** which are made up of **Branches** and **Associates**.

Branches:

- Access to Special Olympics GB Charity Number (800329)
- Individual Special Olympics logo
- Provide annual financial return
- Registered Charity Members for Special Olympics GB AGM votes
- Must SAM register athletes & Unified Partners
- Must register volunteers
- Can access Special Olympics GB competition pathways
- Must annual re-accredit:
 - adoption of correct Governance
 - have a Regional relationship
 - pay accreditation fees
 - have a Steering Group (Minimum - Main Contact, Finance Officer, Safeguarding & Welfare Officer, Eligibility Officer)

Associates:

- No access to Special Olympics GB Charity Number
- Only able to use Special Olympics GB logo if stating “Associated Club”
- No Registered Charity Members (at present)
- Must SAM register athletes & Unified Partners
- Must register volunteers
- Can access Special Olympics GB competition pathways
- Must annual re-accredit:
 - adoption of correct Governance
 - have a Regional relationship
 - pay accreditation fees
 - have a Steering Group (Minimum - Main Contact, Finance Officer, Safeguarding & Welfare Officer, Eligibility Officer)